

STELL

FIREPROOF
AND WINDOWS
PARTITION
CURTAIN WALL

ZHU CHENG



长春铸诚实业股份有限公司
CHANGCHUN ZHUCHENG INDUSTRY CO.,LTD.

地址:长春市双阳区经济开发区汇智大路999号
邮编:130600
电话:0431-82628666
400-050-8887
邮箱:991530246@qq.com



铸诚集团官方网站



官方微信公众平台



钢制防火门窗/隔断/幕墙

FIREPROOF AND WINDOWS
PARTITION CURTAIN WALL



冷弯型钢——理想的建筑材料

COLD-FORVED STEEL- DEAL BUILDING MATERIALS

相比于其它传统建筑材料,钢质型材有着优异的力学基因。

首先,高屈服强度是建筑钢材的一个重要力学特征,在较大变形范围内应力不会增加,形成理想的弹性模型;

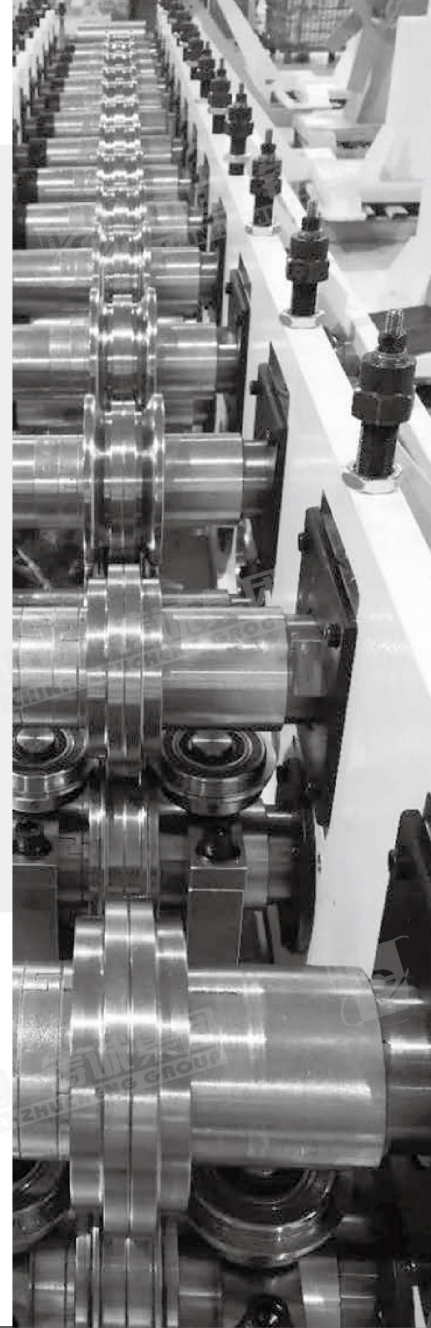
其次,钢材拥有更大的应力值,由于钢材屈服后具有较大的残余变形,已超出结构正常使用范畴,因此抗拉强度能作为结构的安全储备;

第三,较大延展率是钢材断裂前具有的塑性变形能力,这种能力使得结构制造时,钢材即使经受剪切、冲压、弯曲及撞击作用产生局部屈服而无明显破坏;

第四,冲击韧性是钢材抵抗冲击荷载的能力,它用钢材断裂时所吸收的总能量来衡量,韧性是钢材强度塑性的综合指标。

除了力学优势外,冷弯工艺的使用保证了钢本身的物理性能不发生改变,从而继承了上述的天生优良基因

多次的冷弯而形成的复杂截面,还可使钢的强度,抗剪切度大大增加,以满足建筑中对于材料的高规格要求

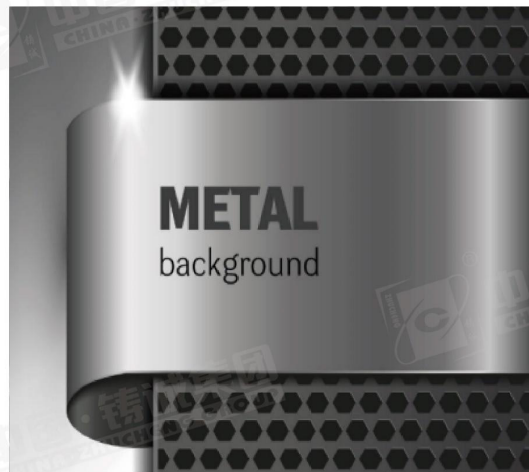


公司简介

COMPANY PROFILE

长春铸诚住工科技发展有限公司系铸诚集团全资子公司,注册资本10,000万元,打造了国际标准化装配式集成部件生产基地,总占地面积达12.3万平方米,核心产品包括集成龙骨、集成墙板、集成隔断、集成吊顶、集成家具、集成卫浴、集成病房、集成手术室等,是铸诚集团4F体系集成装饰产业化生产配套基地。

依托多领域资深专家为核心的研发团队及大量研发成果,铸诚住工2021年全面启动集成空间整装一体化战略,不断推进自主研发成果转化,持续提高设计生产能力,为集成部件的精工制造提供技术和出品保障。



DIRECTORY

目录

公司简介	01
D70防火隔热门窗隔墙钢材	03
A50单玻防火隔墙钢材	17
80N双玻防火隔墙钢材	23
S65纤细民用门窗钢材	27
S45叠加防火幕墙型材	33
S60防火玻璃幕墙型材	35

DESIGN

德式工艺 品质制造



DEFENCE 70

防火隔热门窗隔墙型材系列

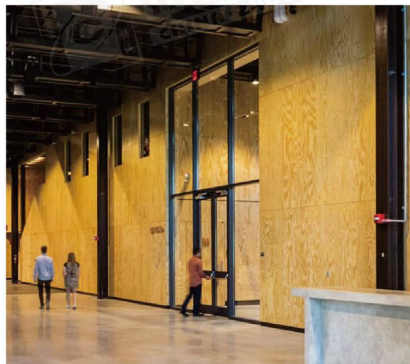
FIREPROOF AND HEAT INSULATION DOOR AND WINDOW PARTITION

具有A类防火隔热功能的型材产品,可应用于A类防火门、A类防火窗、A类防火隔墙,可达到A1.50的防火等级。
采用高强度冷弯型材和PA66组成的隔热材料为一体,并以断桥钢片做为强度支撑,兼顾隔热性与强度。
由铸诚独创的三腔结构设计,以达到更优的保温隔热效果。即使发生火情也能保证产品的隔热性能,确保产品完整性。

It is a profile product with class A fireproof and thermal insulation function, which can be applied to class A fireproof doors, class A fireproof windows and class A fireproof partitions, and can reach the fire rating of a1.50.
The heat insulation material composed of high-strength cold-formed steel profile and PA66 is integrated, and the bridge broken steel sheet is used as the strength support, taking into account the heat insulation and strength.
In addition, the three cavity structure design created by Zhucheng is designed to achieve better thermal insulation and heat cut-off effect. Even in case of fire, it can ensure the thermal insulation performance of the product and ensure the integrity of the product.

适用于

甲级双开防火门	A1.50h
甲级单开防火门	A1.50h
乙级双开防火门	A1.00h
乙级单开防火门	A1.00h
防火非承重隔墙	A1.00h
以及其他各类防火/隔热功能门窗隔墙	



DEFENCE 70

防火隔热门窗隔墙型材系列

FIREPROOF AND HEAT INSULATION DOOR AND WINDOW PARTITION

■ 70D产品特点

看面(腔体)宽度:60mm/45mm

扣条规格:14mm/22mm/29mm

适配玻璃:12-44mm的防火玻璃、中空玻璃等

型材种类:除提供常规的L、T、Z、H型6种型材外

还有另外6种特质特殊产品的型材

Viewing surface (cavity) width: 60mm / 45mm

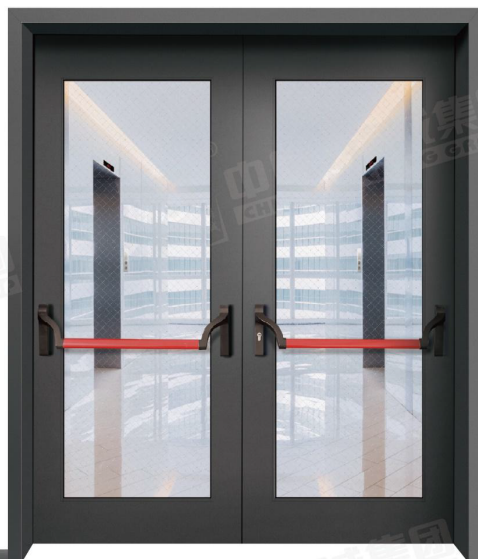
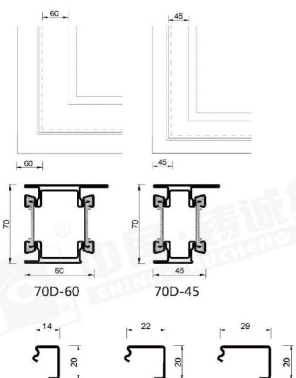
Buckle specification: 14mm / 22mm / 29mm

Suitable glass: 12-44mm fireproof glass, insulating glass, etc

Profile type: in addition to providing 6 conventional L, T, Z and H profiles

There are also six profiles with special characteristics

COLD-FORVED STEEL-DEAL
BUILDING MATERIALS



DEFENCE 70

防火隔热门窗隔墙型材系列

FIREPROOF AND HEAT INSULATION DOOR AND WINDOW PARTITION

✓ 标准内腔通用槽口设计

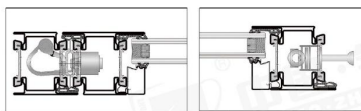
内腔、槽口按国际标准五金尺寸设计,其中内腔可以安装各类隐藏式五金,槽口可以配合各类面板。

The inner cavity and notch are designed according to the international standard hardware size, in which various hidden hardware can be installed in the inner cavity, and the notch can cooperate with various panels.

✓ 优异的防火性能

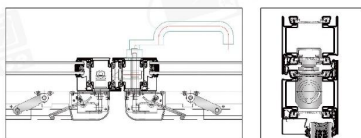
可以实现A类90分钟防火热性能要求,满足甲级、乙级防火门防火的要求,及欧洲E190标准。

It can achieve class a 90 minute fire thermal performance requirements, meet the fire protection requirements of class A and class B fire doors and European ei90 standards.



隐藏式合页

隐藏式中控插销



隐藏式撑杆

隐藏式闭门器

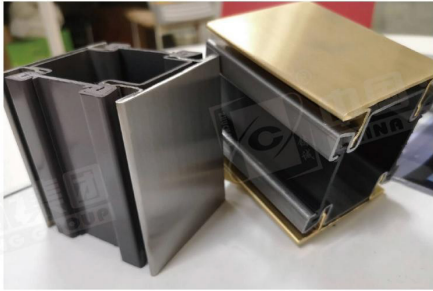


DEFENCE 70

防火隔热门窗隔墙型材系列

SINGLE GLASS FIREPROOF PARTITION PROFILE SERIES





DEFENCE 70

COLD FORMED STEEL-IDEAL BUILDING MATERIALS

☑ 更节能

采用内外双密封条档口,最大限度减少热量传递路径,配合中空节能玻璃,整个门/窗系统可以达到uf(k值)1.3(m²k)。

The internal and external double sealing strips are adopted to reduce the heat transfer path to a greater extent. Combined with hollow energy-saving glass, the whole door / window system can reach UF (k value) 1.3 (m²k).

☑ 多应用形式

70D系列型材可以实现的产品类型丰富多样,不同的样式满足不同的风格,不同的功能需求。

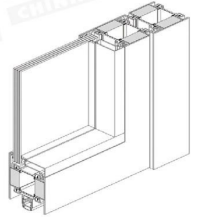
70D series profiles can realize a variety of product types, and different styles can meet different styles and work requirements.

☑ 超高强度

采用1.5mm冷轧热浸镀锌钢为原料,每款型材都经过几十道冷弯工艺形成余的多筋腔体结构,这种结构能最大限度的增加型材横切方向受力。

另外型材的静力性能为铝合的3倍,冷弯工艺的生产过程中不会改变原钢带的物理特性(强度、耐火性等),以满足更大,更宽,更重门窗的要求。

Using 1.5mm cold-rolled hot-dip galvanized steel as raw material, each profile is formed into a miscellaneous multi ribbed cavity structure through dozens of cold bending processes, which can maximize the stress in the cross cutting direction of the profile. In addition, the static performance of the profile is three times that of aluminum alloy. The physical characteristics (strength, fire resistance, etc.) of the original steel strip will not be changed in the production process of cold bending process, so as to meet the requirements of larger, wider and heavier doors and windows.



DEFENCE 70

防火隔热门窗隔墙型材系列

FIREPROOF AND HEAT INSULATION DOOR AND WINDOW PARTITION



铸诚集团致力于将材质高端、工艺精密、设计优秀的钢型系统应用于当代建筑内,并且成为建筑美学与功能的高端名片。并努力打造防火、节能、美观的建筑钢门窗、幕墙、隔断等建筑材料。

DEFENCE 70

防火隔热门窗隔墙型材系列

FIREPROOF AND HEAT INSULATION DOOR AND WINDOW PARTITION

Zhucheng group is committed to applying the steel system with high-end materials, precise technology and excellent design to contemporary buildings, and has become a high-end business card of architectural aesthetics and function. And strive to create fireproof, energy-saving and beautiful building steel doors and windows, curtain walls, partitions and other building materials.

DEFENCE 70

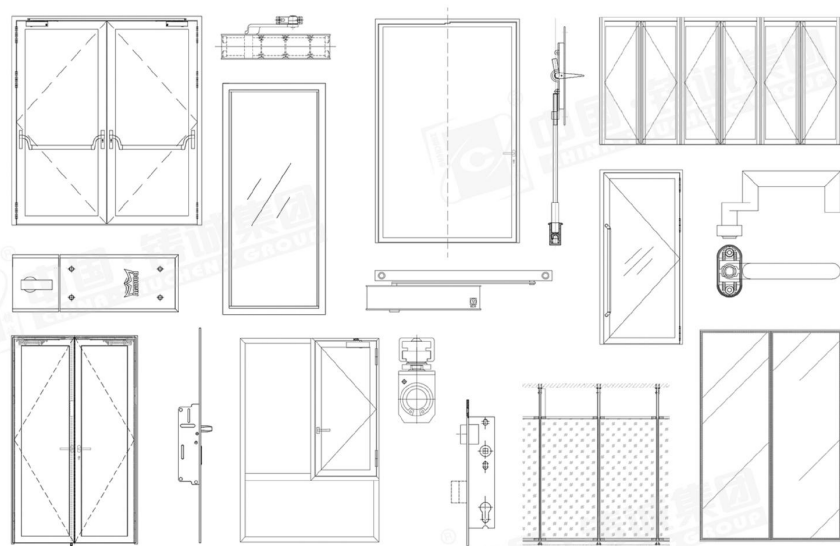
防火隔热门窗隔墙型材系列

FIREPROOF AND HEAT INSULATION DOOR AND WINDOW PARTITION

70D系列可实现产品类型



各种形式的产品种类应用



AMOR 50

单玻防火隔墙型材系列

SINGLE GLASS FIREPROOF PARTITION PROFILE SERIES

由1.5mm优质镀锌钢板冷弯成型的闭腔型材,型材设计简洁,功能实用,与竞品相比有更窄的看面的边框和中庭型材,该系列兼备功能性、可靠性、经济性的防火隔墙产品,可配合8-2mm单层玻璃组成C类防火系统。

A50型材系列可以实现最高120min的防火非隔热完整性,达到现在建筑C类防火性能的高标准。

Amor50 series steel profile is a closed cavity profile formed by cold bending of 1.5mm high-quality galvanized steel plate. The profile design is simple and practical. Compared with competing products, it has narrower viewing frame and atrium profile. This series is a functional, reliable and economical fire partition product, which can cooperate with 8-2mm single-layer glass to form class C fire protection system.

A50 profile series can achieve fire-proof and non thermal insulation integrity up to 120min, reaching the high standard of class C fire performance of buildings.

技术优势

空心腔体结构、型材纤细美观

优良的硬度、刚性及耐磨性

高性能、高熔点,具有防火、防盗性能

经济、节能、低碳、环保,可重复利用



UP to E120

AMOR 50

单玻防火隔墙型材系列

SINGLE GLASS FIREPROOF PARTITION PROFILE SERIES

■ 技术优势

高强度空心腔体结构,型材纤细、美观

合理型材断面尺寸,能满足建筑师、设计人员特殊理念

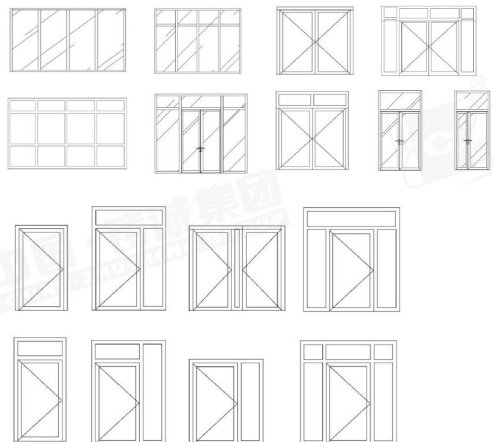
优良的硬度、刚性及耐磨性,可满足环境及技术上的苛刻要求

高性能加高熔点,使其具有良好的防火、防盗性能

经济、节能、低碳、环保、可重复利用,是新一代建筑材料典范

High strength hollow cavity structure, the profile is thin and beautiful.
Reasonable profile section size can meet the special ideas of architects and designers.
Excellent hardness, rigidity and wear resistance, which can meet the harsh
High performance and high melting point make it have good fire prevention
sound insulation performance can reach rw40db (-1: -5)

■ A50满足各种设计样式



AMOR 50

单玻防火隔墙型材系列

SINGLE GLASS FIREPROOF PARTITION PROFILE SERIES

- C类防火115分钟 (型式)
- 材质304不锈钢或镀锌碳钢
- 隐藏式闭门器或外置闭门器
- 隐藏式合页,更好的防盗性能,3D调节焊接合页
- 推荐最大单扇尺寸可达1200mmX3000mm
- 最大承载重量达300KG
- 风压:1.6KN/M2
- 热传导系数uf:4.5w/(m2-k)
- 隔声性能可达Rw40dB(-1:-5)

- class C fire protection 115 minutes (type)
- material: 304 stainless steel or galvanized carbon steel
- concealed door closer or external door closer
- hidden hinge, better anti-theft performance, 3D adjustable welded hinge
- the recommended maximum single leaf size can reach 1200mmx3000mm
- maximum bearing weight up to 300kg
- wind pressure: 1.6kn/m2
- thermal conductivity UF: 4.5w / (m2-k)
- sound insulation performance can reach rw40db (- 1: - 5)



SPACE 80N

双玻防火隔墙型材系列

SINGLE GLASS FIREPROOF PARTITION PROFILE SERIES

由1.5mm优质镀锌钢板冷弯成型,再经过铆冲复合的防火非隔热钢型材,该系列型材以独特的方式实现了双层玻璃样式的防火隔墙。

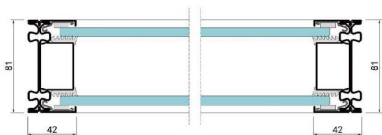
配合相应的C类防火玻璃,可以实现最高120min的防火非隔热完整性,达到现在建筑C类防火性能的高标准。

The fireproof non thermal insulation steel profile is formed by cold bending of 1.5mm high-quality galvanized steel plate and then riveted and punched. This series of profile realizes the double-layer glass style fire partition wall in a unique way.

With the corresponding class C fire-proof glass, the fire-proof and non thermal insulation integrity of up to 120min can be realized, reaching the high standard of class C fire-proof performance of buildings.

适用于

高档办公区
大型商场
医院
学校
工厂
公用建筑办公区



SPACE 80N

双玻防火隔墙钢材

DOUBLE GLASS FIRE PARTITION

- C类防火115分钟(型式)
- 墙体厚度80mm
- 6-12mm玻璃表板,隔墙高度可达3000mm
- 强度与美观结合
- 可安装电动或手动内置百叶,提高私密性
- 推荐最大分格尺寸可达1200mm(宽)X3000mm(高)

- Class C fire protection 115 minutes (type)
- wall thickness 80mm
- 6-12mm glass surface plate, partition height up to 3000mm
- combination of strength and beauty
- electric or manual built-in shutters can be installed to improve privacy
- the recommended maximum grid size can reach 1200mm (width) x3000mm (height)



SLIM 65

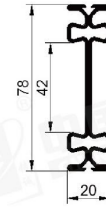
纤细民用门窗型材系列

SLENDER CIVIL DOORS AND WINDOWS

专为高端民用项目设计的钢型材系列,型材采用1.5mm优质镀锌钢板冷弯形成看面极其窄小的型材,以实现广阔的视觉效果。SLIM可实现多种门窗样式,以及各样的开启方式,是新市场下高端门窗的标杆产品。

It is a special series of steel profiles designed for high-end civil projects. The profiles are cold bent with 1.5mm high-quality galvanized steel plate to form extremely narrow profiles to achieve a wide visual effect. SLIM can realize a variety of door and window styles and various opening methods. It is a benchmark product of high-end doors and windows in the new market.

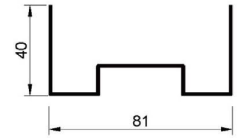




80201

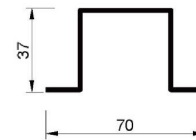
80201

L	: 6.0m
G _{Fe}	: 3.24Kg/m



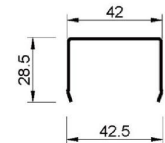
80202

L	: 6.0m
G _{Fe}	: 2.15Kg/m
O	: 0.16m ² /m
me	: 80mm



80203

L	: 6.0m
G _{Fe}	: 2.19Kg/m
O	: 0.15m ² /m
me	: 116mm



80204

L	: 6.0m
G _{Fe}	: 0.91Kg/m
O	: 0.10m ² /m
me	: 100mm

STRENGTH 45

叠加防火幕墙型材系列

SUPERIMPOSED FIRE CURTAIN WALL

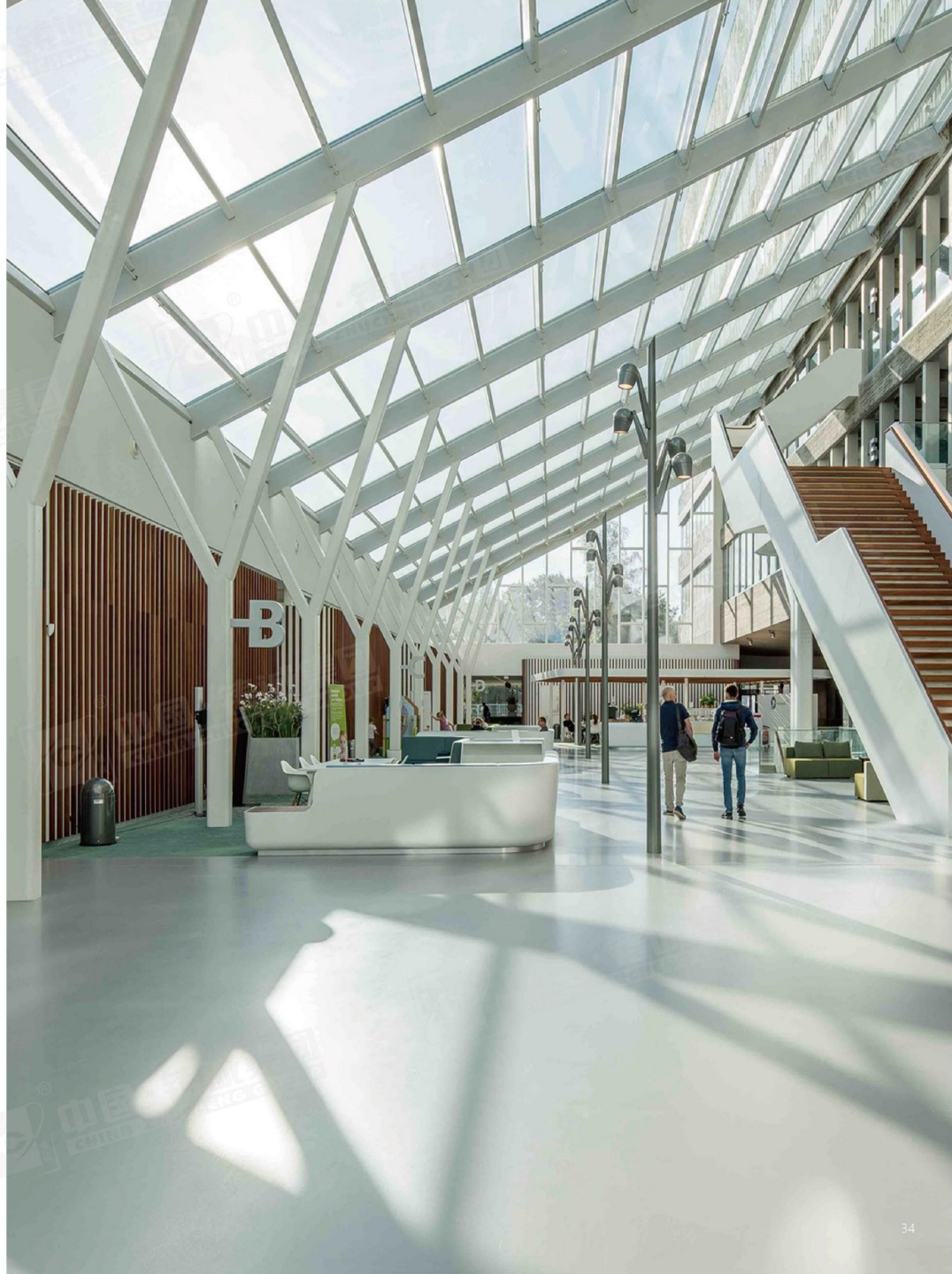
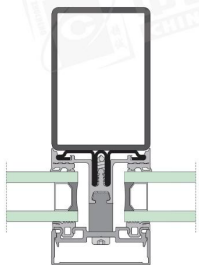
MR叠加幕墙系统因特殊的结构,可以适应于钢结构、木结构等现有建筑结构主体。可以配合各种看面的尺寸的主体,更加适合于超大跨度的幕墙钢结构主体。

Mr superimposed curtain wall system can adapt to the main body of existing building structures such as steel structure and wood structure due to its special structure. It can cooperate with the main body of various viewing dimensions, which is more suitable for the main body of super long-span curtain wall steel structure.

- 极其纤细的可视面,仅45mm,实现更高的通透性
- A类防火1H(型式)
- 热传导系数可达 $u_f=0.97W/(m^2K)$
- 可承载800kg单块玻璃重量
- 风压:2.0KN/M2,可根据更高风压要求选择大尺寸的型材。
- 隔声性能可达 $Rw47d(-1;-5)$

适用于

阳光顶
斜面幕墙
异形结构幕墙



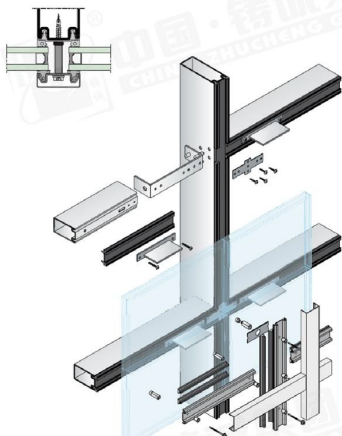
MUTI-ROLE

叠加防火幕墙型材系列

SUPERIMPOSED FIRE CURTAIN WALL

由 1.5 mm 优质镀锌钢板经过冷弯成型的复合幕墙材料，M40/M60 系列配合建筑钢结构、木结构、复合结构，从而组成多应用式的幕墙系统，可实现 A 类或 C 类防火要求。

The composite curtain wall material formed by cold bending of 1.5mm high-quality galvanized steel plate and M40 / M60 series cooperate with building steel structure, wood structure and composite structure to form a multi-purpose curtain wall system, which can meet the class A or class C fire protection requirements.



STRENGTH 60

防火玻璃幕墙型材系列

FIREPROOF GLASS CURTAIN WALL

STRENGTH60系列钢制型材幕墙,是应用于外幕墙的系列产品,ST60幕墙型材是采用3mm优质镀锌钢板经过冷弯成型的闭腔型材。

可应用于有A类或C类防火要求的建筑玻璃幕墙中,同时,对于有超高要求超重要求的建筑幕墙,ST60系列更是可以更好的胜任。

Strength60 series steel profile curtain wall is a series of products applied to external curtain wall. ST60 curtain wall profile is a closed cavity profile formed by cold bending of 3mm high-quality galvanized steel plate.

It can be applied to building glass curtain walls with Class A or class C fire protection requirements. At the same time, ST60 series can be more competent for building curtain walls with ultra-high requirements and overweight requirements.

- 极其纤细的可视面,仅60mm,实现更高的通透性
- A类防火1H(型式)
- 热传导系数可达 $uf=0.97W/(m^2K)$
- 可承载800kg单块玻璃重量
- 风压:2.0KN/M2,可根据更高风压要求
- 选择大尺寸的型材
- 隔声性能可达Rw47d(-1:-5)

适用于

防火外幕墙
防火避难层/间内幕墙
窄看面的幕墙设计
单层跨度超高的幕墙
采光顶

